



Single Phase Voltage Monitor

PBO-1P-T

Specifications

Electrical

Line Voltage: 115, 208, 230 & 265VAC, 1Ø

Frequency: 45 to 65 Hz

Over/Under Voltage: ±15%

Time Delays:

Trip Time: 5 seconds

Re-Start: 5 Seconds on power up
30 Seconds after fault

Set-Up: Automatic on power up

LED:

Good: Continuous Green
Fault Voltage: Solid Red

Power Consumption: 1VA

Output Rating @ 25°C:

10 Amps @ 120VAC

6 Amps @ 277VAC

1/8 HP @ 120/277VAC

5 Amps @ 20VDC

Physical

Mounting: Surface or DIN

Termination:

Line Side: 1/4" Push-On Tabs

Control Side: 0.187" Push-On Tabs

Packaging: Epoxy Fill

Weight: 5 Ounces

Ambient Temperatures

Operating: -40°C to 65°C

Storage: -40°C to 85°C

1Ø VOLTAGES:

115VAC, 1Ø 1 Red Flash

208VAC, 1Ø 2 Red Flash

230VAC, 1Ø 3 Red Flash

265VAC, 1Ø 4 Red Flash



Voltage Ranges:

- 115 to 265VAC, 1Ø

Self-Powered

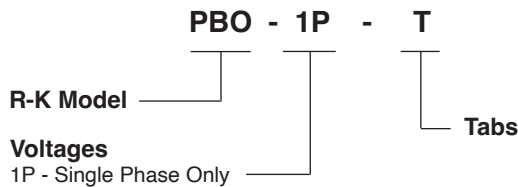
SPDT Relay Contacts

4 Built-In Voltage Selections

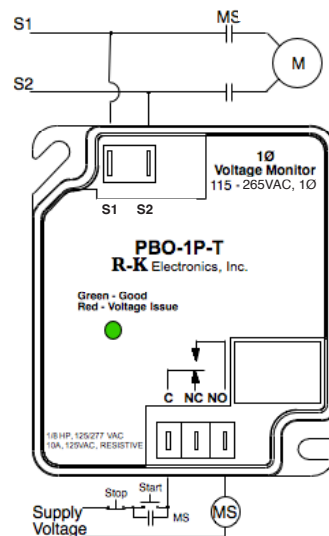
Monitors:

- Over & Under Voltage
- 115 to 265VAC, 1Ø

Ordering Information



Connections



Operation

The PBO-1P-T monitors 4 single phase voltages with the tolerances pre-programmed into the PBO.

Each time the PBO is powered up, the processor evaluates the line voltage and compares it to the pre-programmed line voltages and tolerances. If the line voltage matches one of the programmed voltages and is within the tolerances, the output relay will be energized and the LED will be green. The PBO will indicate what voltage it is set for by flashing the LED red in a sequence corresponding to the selected voltage.

If a voltage fault is detected, the LED will be red.

Dimensions

